

SPEC SHEET + MEASUREMENTS



OGIO® Women's Commuter Full-Zip Soft Shell. LOG755

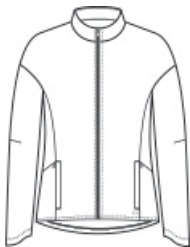
Product photo



Designed for the daily commute, these sleek, water-resistant soft shells have spandex for easy movement and black reflective details for enhanced visibility.

- 88/12 poly/spandex with durable water-repellent (DWR) finish
- Grid microfleece lining for warmth
- 5000MM fabric waterproof rating
- 5000G/M² fabric breathability rating
- Heat transfer OGIO back neck label
- Molded center front zipper
- Drop shoulder
- Black reflective taping along shoulders and sleeves and down center back
- Zippered side pockets with a hidden mesh pocket for valuables or phone
- Black reflective O heat transfer on front left hem
- Drop tail hem

Sketches



front



back

CARE INSTRUCTIONS

Machine Wash Cold With Like Colors. Do Not Bleach. Do Not Use Fabric Softener. Tumble Dry Low. Do Not Iron.

SPEC SHEET + MEASUREMENTS



OGIO® Women's Commuter Full-Zip Soft Shell. LOG755

PRODUCT MEASUREMENTS

	XS	S	M	L	XL	2XL	3XL	4XL
Size	2	4/6	8/10	12/14	16/18	20/22	24/26	28/30
Body Length at Back	27 1/4	27 3/4	28 1/4	28 3/4	29 1/4	29 3/4	30 1/4	30 3/4
Bust	18	19	20	21 1/2	23	24 1/2	26 1/2	28 1/2
Sleeve Length from Center Back	32 1/2	33	33 1/2	34 1/8	34 3/4	35 3/8	35 3/4	36 1/8

Body Length at Back: Measured from high point shoulder to finished hem at back.

Bust: Measured across the chest one inch below armhole when laid flat.

Sleeve Length from Center Back: Measure from Center Back neck to shoulder point to sleeve hem.

SIZE CHARTS

	XS	S	M	L	XL	2XL	3XL	4XL
Size	2	4/6	8/10	12/14	16/18	20/22	24/26	28/30
Bust	32-34	35-36	37-38	39-41	42-44	45-47	48-51	52-55

SPEC SHEET + MEASUREMENTS



OGIO® Women's Commuter Full-Zip Soft Shell. LOG755

HOW TO MEASURE



BUST

Measure under the arm and around the fullest part of the bust with arms down, keeping tape horizontal.

COLORS



Blacktop
PMS BLACK
C



Diesel Grey
PMS 7540C