

SPEC SHEET + MEASUREMENTS



New Era® Women's French Terry Full-Zip Hoodie. LNEA502

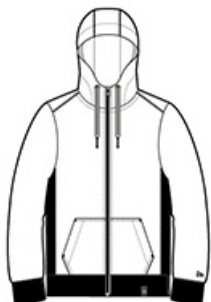
Product photo



This hoodie fuses the soft feel of an old-school essential with modern must-have details.

- 9.4-ounce, 52/48 cotton/poly sueded French terry
- Coverstitched seams
- Lined and twill-taped 3-panel hood
- Zip-through collar
- Woven New Era patch label
- Exposed black nickel zipper and grommets
- Wide drawcords with New Era metal tips
- Rolled-forward shoulders
- Rib knit side panels
- Front pouch pockets
- Embroidered New Era flag logo on left sleeve
- Rib knit cuffs and hem
- Side vents
- Woven New Era badge at hem

Sketches



front



back

CARE INSTRUCTIONS

Machine wash cold with like colors. Do not use fabric softener, tumble dry low, remove promptly, only non-chlorine bleach when needed, cool iron if necessary, do not dry clean.

SPEC SHEET + MEASUREMENTS



New Era® Women's French Terry Full-Zip Hoodie. LNEA502

PRODUCT MEASUREMENTS

	XS	S	M	L	XL	2XL	3XL	4XL
Size	2	4/6	8/10	12/14	16/18	20/22	24/26	28/30
Body Length at Back	26	26 1/2	27	27 1/2	28	28 1/2	29	29 1/2
Bust	18	19	20	21 1/2	23	24 1/2	26 1/2	28 1/2
Sleeve Length	32	32 1/2	33	33 5/8	34 1/4	34 7/8	35 1/4	35 5/8

Body Length at Back: Measured from high point shoulder to finished hem at back.

Bust: Measured across the chest one inch below armhole when laid flat.

Sleeve Length: Start at center of neck and measure down shoulder, down sleeve to hem.

SIZE CHARTS

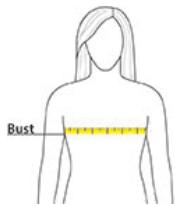
	XS	S	M	L	XL	2XL	3XL	4XL
Size	2	4/6	8/10	12/14	16/18	20/22	24/26	28/30
Bust	32-34	35-36	37-38	39-41	42-44	45-47	48-51	52-55

SPEC SHEET + MEASUREMENTS



New Era® Women's French Terry Full-Zip Hoodie.
LNEA502

HOW TO MEASURE



BUST

Measure under the arm and around the fullest part of the bust with arms down, keeping tape horizontal.

COLORS



Black
PMS BLACK
C



Black Twist
PMS BLACK
C



Dark Royal
Twist
PMS 2768C



Light Graphite
Twist
PMS COOL
GRAY 10C



True Navy
Twist
PMS 533C