

## SPEC SHEET + MEASUREMENTS



### OGIO® Women's Hinge Full-Zip. LOG820

#### Product photo



When your style hinges on looking sophisticated and modern, this subtly textured jacket that hits the mark with moisture-wicking and stretch performance.

- 6-ounce, 100% poly
- Baseball-inspired collar
- OGIO heat transfer label for tag-free comfort
- Exposed polished molded zipper with locking zipper pull
- Sits at high hip
- Angled back seaming details
- Black reflective O heat transfer on front left hem

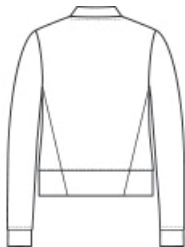
#### CARE INSTRUCTIONS

Machine cold with like colors. Do not use fabric softener. Do not bleach. Tumble dry low. Cool iron if necessary. Do not dry clean.

#### Sketches



front



back

# SPEC SHEET + MEASUREMENTS



## OGIO® Women's Hinge Full-Zip. LOG820

### PRODUCT MEASUREMENTS

	XS	S	M	L	XL	2XL	3XL	4XL
Body Length at Back	24	24 1/2	25	25 1/2	26	26 1/2	27	27 1/2
Bust	18	19	20	21 1/2	23	24 1/2	26 1/2	28 1/2
Sleeve Length from Center Back	32	32 1/2	33	33 5/8	34 1/4	34 7/8	35 1/4	35 5/8

**Body Length at Back:** Measured from high point shoulder to finished hem at back.

**Bust:** Measured across the chest one inch below armhole when laid flat.

**Sleeve Length from Center Back:** Measure from Center Back neck to shoulder point to sleeve hem.

### SIZE CHARTS

	XS	S	M	L	XL	2XL	3XL	4XL
Bust	32-34	35-37	38-40	41-43	44-46	47-49	50-53	54-57

# SPEC SHEET + MEASUREMENTS



OGIO® Women's Hinge Full-Zip. LOG820

## HOW TO MEASURE

---



### BUST

Measure under the arm and around the fullest part of the bust with arms down, keeping tape horizontal.

## COLORS

---



Blacktop  
PMS BLACK  
C



River Blue  
Navy  
PMS 533C