

SPEC SHEET + MEASUREMENTS

PORT AUTHORITY.

Port Authority® Women's Hooded Core Soft Shell Jacket. L335

Product photo



An attached hood and bold colorblocking give this well-priced, wind-resistant, water-repellent soft shell extra rain-shielding protection and strong style.

- 100% polyester woven shell bonded to a water-resistant film insert and a 100% polyester microfleece lining
- 1000MM fabric waterproof rating
- 1000G/M² fabric breathability rating
- Adjustable hood with locking drawcord to customize fit
- Reverse coil zippers
- Interior storm flap with chin guard
- Front zippered pockets
- Zippered left sleeve pocket
- Open hem with locking drawcord

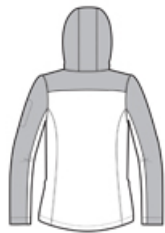
CARE INSTRUCTIONS

Machine wash cold with like colors only. Non-chlorine bleach when needed. Tumble dry low. Cool iron if necessary.

Sketches



front



back

SPEC SHEET + MEASUREMENTS

PORT AUTHORITY

Port Authority® Women's Hooded Core Soft Shell Jacket.
L335

PRODUCT MEASUREMENTS

| | XS | S | M | L | XL | XXL | 3XL | 4XL |
|---------------------|--------|--------|--------|--------|--------|--------|--------|--------|
| Size | 2 | 4/6 | 8/10 | 12/14 | 16/18 | 20/22 | 24/26 | 28/30 |
| Bust | 18 1/2 | 19 1/2 | 20 1/2 | 22 | 23 1/2 | 25 | 27 | 29 |
| Body Length at Back | 25 1/2 | 26 | 26 1/2 | 27 | 27 1/2 | 28 | 28 1/2 | 29 |
| Sleeve Length | 32 | 32 1/2 | 33 | 33 5/8 | 34 1/4 | 34 7/8 | 35 1/4 | 35 5/8 |

- Bust:** Measured across the chest one inch below armhole when laid flat.
- Body Length at Back:** Measured from high point shoulder to finished hem at back.
- Sleeve Length:** Start at center of neck and measure down shoulder, down sleeve to hem.

SIZE CHARTS

| | XS | S | M | L | XL | XXL | 3XL | 4XL |
|------|-------|-------|-------|-------|-------|-------|-------|-------|
| Size | 2 | 4/6 | 8/10 | 12/14 | 16/18 | 20/22 | 24/26 | 28/30 |
| Bust | 32-34 | 35-36 | 37-38 | 39-41 | 42-44 | 45-47 | 48-51 | 52-55 |

SPEC SHEET + MEASUREMENTS

PORT AUTHORITY

Port Authority® Women's Hooded Core Soft Shell Jacket.
L335

HOW TO MEASURE



BUST

Measure under the arm and around the fullest part of the bust with arms down, keeping tape horizontal.

COLORS



Black
PMS BLACK
C



Black/
Battleship
Grey
PMS BLACK
C



Dress
Blue Navy/
Battleship
Grey
PMS 533C