

## SPEC SHEET + MEASUREMENTS

*Brooks Brothers*

### Brooks Brothers® Women's Cotton Stretch Long Cardigan Sweater. BB18403

#### Product photo



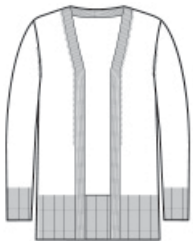
This timeless cardigan features an open front and longer length for easy wear-over-anything style.

- 70/30 pima cotton/nylon
- Full-fashioned throughout
- 1x1 rib neck
- Wide rib at cuffs and hem

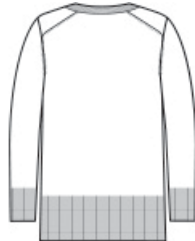
#### CARE INSTRUCTIONS

Machine Wash Cold With Like Colors. Gentle Cycle. Only Non-Chlorine Bleach When Needed. Reshape And Lay Flat To Dry. Cool Iron If Necessary.

#### Sketches



front



back

# SPEC SHEET + MEASUREMENTS

*Brooks Brothers*

Brooks Brothers® Women's Cotton Stretch Long Cardigan  
Sweater. BB18403

## PRODUCT MEASUREMENTS

	XS	S	M	L	XL	2XL	3XL	4XL
Size	2	4/6	8/10	12/14	16/18	20/22	24/26	28/30
Body Length at Back	27 1/2	28	28 1/2	29	29 1/2	30	30 1/2	31
Bust	20	21	22	23 1/2	25	26 1/2	28 1/2	30 1/2
Sleeve Length from Center Back	31	31 1/2	32	32 5/8	33 1/4	33 7/8	34 1/4	34 5/8

**Body Length at Back:** Measured from high point shoulder to finished hem at back.

**Bust:** Measured across the chest one inch below armhole when laid flat.

**Sleeve Length from Center Back:** Measure from Center Back neck to shoulder point to sleeve hem.

## SIZE CHARTS

	XS	S	M	L	XL	2XL	3XL	4XL
Size	2	4/6	8/10	12/14	16/18	20/22	24/26	28/30
Bust	32-34	35-36	37-38	39-41	42-44	45-47	48-51	52-55

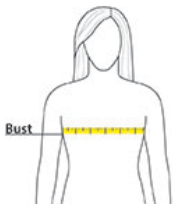
# SPEC SHEET + MEASUREMENTS

*Brooks Brothers*

Brooks Brothers® Women's Cotton Stretch Long Cardigan  
Sweater. BB18403

## HOW TO MEASURE

---



### **BUST**

Measure under the arm and around the fullest part of the bust with arms down, keeping tape horizontal.

## COLORS

---



Charter Blue  
Heather  
PMS 7684C



Deep Black  
PMS BLACK  
C



Light Shadow  
Grey Heather  
PMS  
HEATHER



Navy Blazer  
PMS 533C