

## SPEC SHEET + MEASUREMENTS



### Nike Tall Long Sleeve Dri-FIT Stretch Tech Polo. 604940

#### Product photo



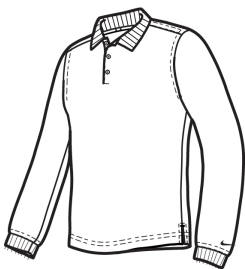
Long sleeves elevate this polo to another level of sophistication while Dri-FIT moisture management technology adds unparalleled performance. Stretch fabric for hassle-free swinging motion.

- 5-ounce, 100% polyester Dri-FIT fabric
- Flat knit collar and cuffs
- Heat transfer label for tag-free comfort
- Three-button placket
- Dyed-to-match buttons on Black and Midnight Navy
- White buttons on Varsity Red, Anthracite and Blue Sapphire
- Side vents
- Contrast embroidered Swoosh logo on lower left sleeve

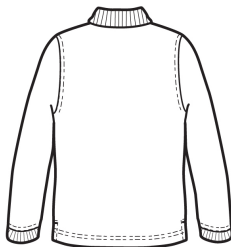
#### CARE INSTRUCTIONS

Machine wash cold. wash inside out; wash with like colors. Do not use softeners. Do not use bleach. Tumble dry low. Do not iron. do not dry clean

#### Sketches



front



back

# SPEC SHEET + MEASUREMENTS



## Nike Tall Long Sleeve Dri-FIT Stretch Tech Polo. 604940

### PRODUCT MEASUREMENTS

	LT	XLT	2XLT	3XLT	4XLT
Chest	23 2/9	25 1/5	27 1/6	29 1/7	31 1/9
Sleeve Length	38 1/9	39	39 4/5	40 3/5	41 3/8
Body Length at Back	32 2/3	33 6/7	35	36 2/9	37 2/5

**Chest:** Measured across the chest one inch below armhole when laid flat.

**Sleeve Length:** Start at center of neck and measure down shoulder, down sleeve to hem.

**Body Length at Back:** Measured from high point shoulder to finished hem at back.

### SIZE CHARTS

	LT	XLT	2XLT	3XLT	4XLT
Chest	41 - 44	44 - 48 1/2	48 1/2 - 53 1/2	53 1/2 - 58	58 - 63

### HOW TO MEASURE



#### CHEST

Measure under the arm and around the fullest part of the chest with arms down, keeping tape horizontal.

# SPEC SHEET + MEASUREMENTS



Nike Tall Long Sleeve Dri-FIT Stretch Tech Polo. 604940

## COLORS

---



Anthracite  
PMS 432C



Black  
PMS  
PROCESS  
BLACK C



Blue Sapphire  
PMS 661C



Midnight Navy  
PMS 2767C



Varsity Red  
PMS 704C