

SPEC SHEET + MEASUREMENTS



District® The Concert Tank®. DT5300

Product photo



A tank that rocks with style.

- 4.3-ounce (145-gram)
- 100% soft spun cotton, 30 singles
- 50/50 soft spun cotton/poly (Neons, Heathered Navy, Heathered Royal)
- 90/10 soft spun cotton/poly (Heather Grey)
- 98/2 soft spun cotton/poly (White Heather)
- Slightly slimmer body
- Tear-away label
- Self-binding at neck and armholes

Due to the nature of 50/50 cotton/polyester neon fabrics, special care must be taken throughout the printing process.

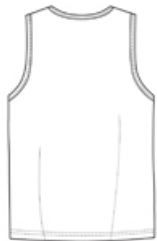
CARE INSTRUCTIONS

Machine wash cold with like colors, non-chlorine bleach when needed. Do not use fabric softener. Tumble dry low.

Sketches



front



back

SPEC SHEET + MEASUREMENTS



District® The Concert Tank®. DT5300

PRODUCT MEASUREMENTS

	XS	S	M	L	XL	2XL	3XL	4XL
Body Length at Back	27	28	29	30	31	32	32 1/2	33
Chest Width	17 1/2	18 1/2	20	21 1/2	23 1/2	25 1/2	27 1/2	29

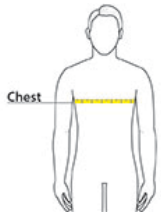
Body Length at Back: Measured from high point shoulder to finished hem at back.

Chest Width: Measured across the chest one inch below armhole when laid flat.

SIZE CHARTS

	XS	S	M	L	XL	2XL	3XL	4XL
Chest	32-34	35-36	37-39	40-42	43-45	46-48	49-51	52-54

HOW TO MEASURE



CHEST

Measure under the arm and around the fullest part of the chest with arms down, keeping tape horizontal.

SPEC SHEET + MEASUREMENTS



District® The Concert Tank®. DT5300

COLORS



Black
PMS BLACK
C



Charcoal
PMS 7540C



Deep Royal
PMS 7687 C



Heather Grey
PMS NO
MATCH



Heathered
Navy
PMS 2379C



Heathered
Royal
PMS 660C



Neon Orange
PMS 811 C



Neon Pink
PMS 190C



Neon Yellow
PMS NO
MATCH



New Navy
PMS 533C



New Red
PMS 3517C



NewRdHthr



White
PMS NO
MATCH



White Heather
PMS NO
MATCH