

SPEC SHEET + MEASUREMENTS

PORT&CO.

Port & Co[™] Youth Long Sleeve Performance Tee.
PC380YLS

Product photo



Rated UPF50 to help combat harmful UV rays, this tee also performs with Dry Zone[®] moisture-wicking technology to keep you cool, dry and comfortable.

- 3.8-ounce, 100% polyester
- UPF rating of 50
- Removable tag for comfort and relabeling
- Hemmed cuffs

Please note: This product is transitioning from tag-free labels to tear-away labels. Your order may contain a combination of both.

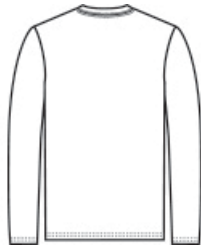
CARE INSTRUCTIONS

Machine wash cold, inside out with like colors. Do not use fabric softener. Only non-chlorine bleach, when needed. Tumble dry low. Do not iron.

Sketches



front



back

SPEC SHEET + MEASUREMENTS

PORT&CO.

Port & Co[™] Youth Long Sleeve Performance Tee.
PC380YLS

PRODUCT MEASUREMENTS

	XS	S	M	L	XL
Size	2	4/6	8/10	12/14	16/18
Body Length at Back	19	21	23	25	27
Chest Width	14	15 1/2	17	18	19 1/2
Sleeve Length	22	25	27 1/2	30	33

Body Length at Back: Measured from high point shoulder to finished hem at back.

Chest Width: Measured across the chest one inch below armhole when laid flat.

Sleeve Length: Start at center of neck and measure down shoulder, down sleeve to hem.

SIZE CHARTS

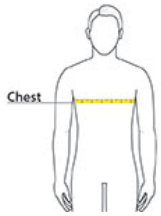
	XS	S	M	L	XL
Size	4/5	6/8	10/12	14/16	18/20
Chest	22-24	25-27	28-30	30-32	32-34

SPEC SHEET + MEASUREMENTS

PORT&CO.

Port & Co[™] Youth Long Sleeve Performance Tee.
PC380YLS

HOW TO MEASURE



CHEST

Measure under the arm and around the fullest part of the chest with arms down, keeping tape horizontal.

COLORS



Deep Navy
PMS 532C



Jet Black
PMS BLACK
C



Red
PMS 200C



Silver
PMS NO
MATCH



White
PMS WHITE