

SPEC SHEET + MEASUREMENTS

SPORT-TEK

Sport-Tek® PosiCharge® Electric Heather Colorblock 1/4-Zip Pullover. ST397

Product photo



This lightweight pullover locks in color, wicks moisture and has an amped up colorblock look.

- 4.1-ounce, 100% polyester jersey with PosiCharge technology (Electric Heather)
- 4.7-ounce, 100% polyester jersey with PosiCharge technology (solid)
- Removable tag for comfort and relabeling
- Cadet collar
- Reverse coil zipper
- Colorblock on shoulders and sleeves
- Set-in sleeves
- Open cuffs and hem

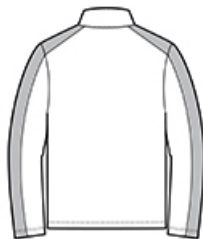
CARE INSTRUCTIONS

Machine wash cold with like colors. Do not bleach. Tumble dry low. Remove promptly. Cool iron if needed. Do not use fabric softener. Do not dry clean.

Sketches



front



back

SPEC SHEET + MEASUREMENTS



Sport-Tek® PosiCharge® Electric Heather Colorblock 1/4-Zip Pullover. ST397

PRODUCT MEASUREMENTS

	XS	S	M	L	XL	2XL	3XL	4XL
Chest	19	20 1/2	22	23 1/2	25	26 1/2	28 1/2	30 1/2
Body Length at Back	27	28	29	30	31	32	32 1/2	33
Sleeve Length	34 3/4	35 1/2	36 1/4	37	37 3/4	38 1/2	39 1/4	40

Chest: Measured across the chest one inch below armhole when laid flat.

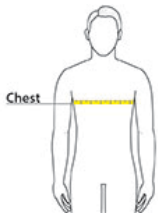
Body Length at Back: Measured from high point shoulder to finished hem at back.

Sleeve Length: Start at center of neck and measure down shoulder, down sleeve to hem.

SIZE CHARTS

	XS	S	M	L	XL	2XL	3XL	4XL
Chest	32-34	35-37	38-40	41-43	44-46	47-49	50-53	54-57

HOW TO MEASURE



CHEST

Measure under the arm and around the fullest part of the chest with arms down, keeping tape horizontal.

SPEC SHEET + MEASUREMENTS



Sport-Tek® PosiCharge® Electric Heather Colorblock 1/4-Zip Pullover. ST397

COLORS



Black Electric/
Black
PMS BLACK
C



Grey-Black
Electric/ Black
PMS BLACK
C



True Navy
Electric/ True
Navy
PMS 533C



True Royal
Electric/ True
Royal
PMS 7687C