

# SPEC SHEET + MEASUREMENTS

PORT AUTHORITY.

## Port Authority® Women's Core Soft Shell Vest. L325

### Product photo



Keep your core warm and protected from the elements in this versatile vest that's easy on the budget.

- 100% polyester woven shell bonded to a water-resistant film insert and a 100% polyester microfleece lining
- 92/8 poly/spandex woven shell bonded to a water-resistant film insert and a 100% polyester microfleece lining (Heathers)
- 1000MM fabric waterproof rating
- 1000G/M<sup>2</sup> fabric breathability rating
- Wind-resistant and water-repellent
- Reverse coil zippers
- Zip-through cadet collar with chin guard
- Front zippered pockets
- Open hem

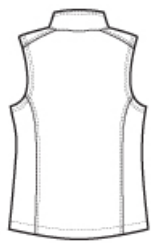
### CARE INSTRUCTIONS

Machine wash cold with like colors, only non-chlorine bleach when needed. Tumble dry medium. Cool iron if necessary.

### Sketches



front



back

# SPEC SHEET + MEASUREMENTS

PORT AUTHORITY

Port Authority® Women's Core Soft Shell Vest. L325

## PRODUCT MEASUREMENTS

	XS	S	M	L	XL	XXL	3XL	4XL
Size	2	4/6	8/10	12/14	16/18	20/22	24/26	28/30
Bust	17	18	19	20 1/2	22	23 1/2	25 1/2	27 1/2
Body Length at Front	24 1/4	24 3/4	25 1/4	26 1/4	27 1/4	28 1/4	28 3/4	29 1/4

**Bust:** Measured across the chest one inch below armhole when laid flat.

**Body Length at Front:** Measure from high point shoulder to lowest point of hem at front.

## SIZE CHARTS

	XS	S	M	L	XL	XXL	3XL	4XL
Size	2	4/6	8/10	12/14	16/18	20/22	24/26	28/30
Bust	32-34	35-36	37-38	39-41	42-44	45-47	48-51	52-55

# SPEC SHEET + MEASUREMENTS

PORT AUTHORITY.

Port Authority® Women's Core Soft Shell Vest. L325

## HOW TO MEASURE



### BUST

Measure under the arm and around the fullest part of the bust with arms down, keeping tape horizontal.

## COLORS



Battleship  
Grey  
PMS 7540 C



Black  
PMS BLACK  
C



Black  
Charcoal  
Heather  
PMS 426C



Dress Blue  
Navy  
PMS 533C



Marshmallow  
PMS COOL  
GRAY 1C