

SPEC SHEET + MEASUREMENTS

PORT AUTHORITY.

Port Authority® Easy Care Extra Long Bib Apron with Stain Release. A700

Product photo



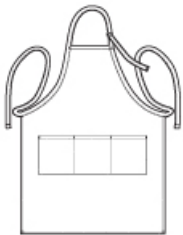
This extra-long apron offers protection from stains and wrinkles. The adjustable neck strap ensures a proper fit.

- 8-ounce, 65/35 poly/cotton twill
- Three front pockets
- 25"w x 34.5"l

CARE INSTRUCTIONS

Machine wash warm, do not bleach. Tumble dry low.

Sketches



front

SPEC SHEET + MEASUREMENTS

PORT AUTHORITY







Port Authority® Easy Care Extra Long Bib Apron with Stain Release. A700

PRODUCT MEASUREMENTS

	OSFA
Length	34 1/2
Apron Waist Width	25
Apron Width at Top	9 1/2
Pocket Height	7
Pocket Width	21 1/2

- Length:** Measured from center front neck to hem.
- Apron Waist Width:** Measure under the waist straps straight across, edge to edge.
- Apron Width at Top:** Measure at top edge of apron, edge to edge.
- Pocket Height:** Measure from top to bottom at center.
- Pocket Width:** Measure from side to side at top edge.

COLORS

					
Black PMS BLACK C	Khaki PMS 7531C	Navy PMS 7547C	Red PMS 200C	Royal PMS 7687C	White