

# SPEC SHEET + MEASUREMENTS



## Carhartt Force® 1/4-Zip Long Sleeve T-Shirt. CT106660

### Product photo



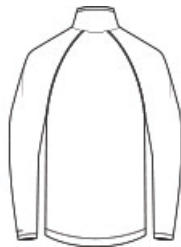
This midweight 1/4-zip tee fights sweat and is built for hard work thanks to Carhartt Force® technology.

- Durable 5.75-ounce, 65/35 cotton/poly stretch plaited jersey knit
- 59/41 cotton/poly stretch plaited jersey knit (Heather Grey)
- 60/40 poly/cotton stretch plaited jersey knit (Carbon Heather)
- Carhartt Force® technology wicks sweat, dries fast and fights odors
- FastDry® technology keeps you cool for all-day comfort
- UPF 25+
- Raglan sleeves to increase range of motion
- Contrast color neck tape
- Tagless neck label
- Smooth flatlock seams
- Carhartt label sewn on left chest pocket
- Carhartt Force® labeling on left sleeve
- Relaxed fit

### Sketches



front



back

### CARE INSTRUCTIONS

Turn Garment Inside Out. Machine Wash Warm Like Colors. Non-Chlorine Bleach. Tumble Dry Low. Do Not Use Fabric Softeners. Cool Iron. Do Not Iron Ornamentation. Do Not Dry Clean. Exclusive Trimming.

# SPEC SHEET + MEASUREMENTS



## Carhartt Force® 1/4-Zip Long Sleeve T-Shirt. CT106660

### PRODUCT MEASUREMENTS

	S	M	L	XL	2XL	3XL	4XL
Body Length at Back	29 3/4	30 1/4	30 3/4	31 3/4	32 3/4	33 3/4	34 3/4
Chest	20	22	24	26	28	30	32
Sleeve Length from Center Back	34 1/4	35	35 3/4	36 1/2	37 1/4	38	38 3/4
Chest Pocket Height	5 3/4	5 3/4	5 3/4	5 3/4	5 3/4	5 3/4	5 3/4
Chest Pocket Width	4 3/4	4 3/4	4 3/4	4 3/4	4 3/4	4 3/4	4 3/4

**Body Length at Back:** Measured from high point shoulder to finished hem at back.

**Chest:** Measured across the chest one inch below armhole when laid flat.

**Sleeve Length from Center Back:** Measure from Center Back neck to shoulder point to sleeve hem.

**Chest Pocket Height:** Measure from top to bottom at center.

# SPEC SHEET + MEASUREMENTS

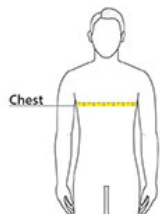


Carhartt Force<sup>®</sup> 1/4-Zip Long Sleeve T-Shirt. CT106660

## SIZE CHARTS

	S	M	L	XL	2XL	3XL	4XL	5XL	6XL
Chest	34-36	38-40	42-44	46-48	50-52	54-56	58-60	62-64	66-68

## HOW TO MEASURE



### CHEST

Measure under the arm and around the fullest part of the chest with arms down, keeping tape horizontal.

## COLORS



Black



Carbon  
Heather



Heather Grey



Navy