

SPEC SHEET + MEASUREMENTS



OGIO® Evolution Henley. OG148

Product photo



Let your style evolve from ho-hum to cutting-edge in this ultra-soft OGIO look that performs with moisture wicking and stretch.

- 5-ounce, 83/12/5 poly/rayon/spandex twill jersey with stay-cool wicking technology
- OGIO heat transfer label for tag-free comfort
- 3-button placket
- Clear smoke grey buttons
- Forward shoulders
- Embroidered O on left sleeve

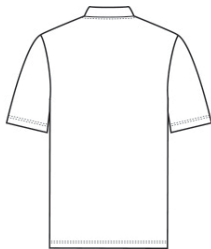
CARE INSTRUCTIONS

Machine Wash Cold With Like Colors. Do Not Use Fabric Softener. Do Not Bleach. Tumble Dry Low. Cool Iron.

Sketches



front



back

SPEC SHEET + MEASUREMENTS



OGIO® Evolution Henley. OG148

PRODUCT MEASUREMENTS

	XS	S	M	L	XL	2XL	3XL	4XL
Body Length at Back	27	28	29	30	31	32	32 1/2	33
Chest Width	18	19 1/2	21	22 1/2	24	25 1/2	27 1/2	29 1/2
Sleeve Length from Center Back	16 3/4	17 1/2	18 1/4	19	19 3/4	20 1/2	21 1/4	22

Body Length at Back: Measured from high point shoulder to finished hem at back.

Chest Width: Measured across the chest one inch below armhole when laid flat.

Sleeve Length from Center Back: Measure from Center Back neck to shoulder point to sleeve hem.

SIZE CHARTS

	XS	S	M	L	XL	2XL	3XL	4XL
Chest	32-34	35-37	38-40	41-43	44-46	47-49	50-53	54-57

SPEC SHEET + MEASUREMENTS



OGIO® Evolution Henley. OG148

HOW TO MEASURE



CHEST

Measure under the arm and around the fullest part of the chest with arms down, keeping tape horizontal.

COLORS



Blacktop
PMS BLACK
C



Tarmac Grey
PMS 7540C