

SPEC SHEET + MEASUREMENTS



Nike Long Sleeve Dri-FIT Stretch Tech Polo. 466364

Product photo



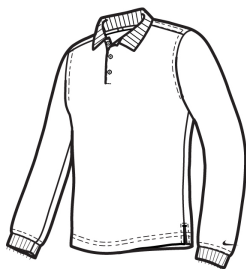
Long sleeves elevate this polo to another level of sophistication while Dri-FIT moisture management technology adds unparalleled performance. Stretch fabric for hassle-free swinging motion.

- 5-ounce, 100% polyester Dri-FIT fabric
- Flat knit collar and cuffs
- Heat transfer label for tag-free comfort
- Three-button placket
- Dyed-to-match buttons on White, Black and Midnight Navy
- White buttons on Varsity Red, Anthracite and Blue Sapphire
- Side vents
- Contrast embroidered Swoosh logo on lower left sleeve

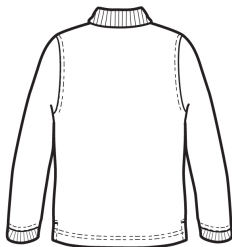
CARE INSTRUCTIONS

Machine wash cold. Wash inside out; wash with like colors. Do not use softeners. Do not use bleach. Tumble dry low. Do not iron. Do not dry clean.

Sketches



front



back

SPEC SHEET + MEASUREMENTS



Nike Long Sleeve Dri-FIT Stretch Tech Polo. 466364

PRODUCT MEASUREMENTS

	XS	S	M	L	XL	2XL	3XL	4XL
Chest	19	20 1/2	22	23 1/2	25	26 1/2	28	29 1/2
Sleeve Length from Center Back	33 1/4	34	34 3/4	35 1/2	36 1/2	37 1/2	38 1/2	39 1/2
Body Length at Back	27 1/4	28 1/2	29 1/2	30 1/2	32	33 1/2	34 1/2	35 1/2

Chest: Measured across the chest one inch below armhole when laid flat.

Sleeve Length from Center Back: Measure from Center Back neck to shoulder point to sleeve hem.

Body Length at Back: Measured from high point shoulder to finished hem at back.

SIZE CHARTS

	XS	S	M	L	XL	2XL	3XL	4XL
Chest	32-35	35 - 37 1/2	37 1/2 - 41	41 - 44	44 - 48 1/2	48 1/2 - 53 1/2	53 1/2 - 58	58 - 63

SPEC SHEET + MEASUREMENTS



Nike Long Sleeve Dri-FIT Stretch Tech Polo. 466364

HOW TO MEASURE



CHEST

Measure under the arm and around the fullest part of the chest with arms down, keeping tape horizontal.

COLORS



Anthracite
PMS 432C



Black
PMS
PROCESS
BLACK C



Blue Sapphire
PMS 661C



Midnight Navy
PMS 2767C



Varsity Red
PMS 704C



White