

## SPEC SHEET + MEASUREMENTS

**SPORT-TEK**

### Sport-Tek® PosiCharge® Position Short with Pockets. ST575

#### Product photo



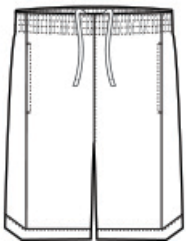
Made with closed-hole mesh for an athletic look, this short is tailored for today's athlete and has PosiCharge technology for enduring color.

- 4.4-ounce, 100% polyester with PosiCharge technology
- Removable tag for comfort and relabeling
- Elastic waistband with secured self-fabric drawcord
- Side pockets integrate into side panels with overlap notch details
- 9-inch inseam

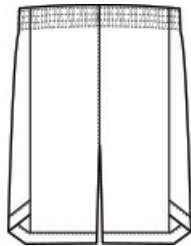
#### CARE INSTRUCTIONS

Machine Wash Cold With Like Colors. Do Not Use Fabric Softener. Do Not Bleach. Tumble Dry Low. Remove Promptly. Cool Iron If Needed.

#### Sketches



front



back

# SPEC SHEET + MEASUREMENTS



## Sport-Tek® PosiCharge® Position Short with Pockets. ST575

### PRODUCT MEASUREMENTS

	XS	S	M	L	XL	2XL	3XL	4XL
Waist	12	13 1/2	15	16 1/2	18	19 1/2	21	22 1/2
Inseam	9	9	9	9	9 1/4	9 1/2	9 3/4	10

**Waist:** Measured point to point across the waistband when laid flat.

**Inseam:** Measured from crotch seam to hem.

### SIZE CHARTS

	XS	S	M	L	XL	2XL	3XL	4XL
Waist	26-28	29-31	32-34	35-37	38-40	41-43	44-47	48-51

### HOW TO MEASURE



#### WAIST

Measure around the smallest part of the natural waist.

# SPEC SHEET + MEASUREMENTS



Sport-Tek® PosiCharge® Position Short with Pockets.  
ST575

## COLORS

---



Black  
PMS BLACK  
C



Graphite  
PMS 7540C



True Navy  
PMS 533C



True Royal  
PMS 7687C