

# SPEC SHEET + MEASUREMENTS

PORT AUTHORITY.

Port Authority® Women's Luxe Knit Button Tunic. LK5602

## Product photo



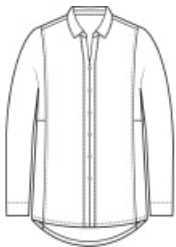
A versatile complement to any wardrobe, this polished tunic offers supreme comfort and a touch of luxury.

- 6.6-ounce, 94/6 rayon/spandex jersey
- Open self-fabric collar with collar stand
- Decorative, non-functioning 6-button placket with faux horn buttons
- Long dolman sleeves
- Front and back seam details
- Self-turned cuffs and hem
- Tunic length, drop tail hem

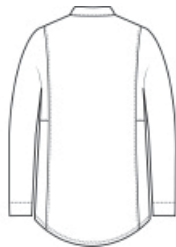
## CARE INSTRUCTIONS

Machine Wash Cold With Like Colors. Do Not Use Fabric Softener. Only Non-Chlorine Bleach When Needed. Tumble Dry Low. Remove Promptly. Cool Iron If Necessary.

## Sketches



front



back

# SPEC SHEET + MEASUREMENTS

PORT AUTHORITY

Port Authority® Women's Luxe Knit Button Tunic. LK5602

## PRODUCT MEASUREMENTS

	XS	S	M	L	XL	XXL	3XL	4XL
Size	2	4/6	8/10	12/14	16/18	20/22	24/26	28/30
Body Length at Back	28	28 1/2	29	29 1/2	30	30 1/2	31	31 1/2
Bust	18	19	20	21 1/2	23	24 1/2	26 1/2	28 1/2
Sleeve Length from Center Back	30 1/2	31	31 1/2	32 1/8	32 3/4	33 3/8	33 3/4	34 1/8

**Body Length at Back:** Measured from high point shoulder to finished hem at back.

**Bust:** Measured across the chest one inch below armhole when laid flat.

**Sleeve Length from Center Back:** Measure from Center Back neck to shoulder point to sleeve hem.

## SIZE CHARTS

	XS	S	M	L	XL	XXL	3XL	4XL
Size	2	4/6	8/10	12/14	16/18	20/22	24/26	28/30
Bust	32-34	35-36	37-38	39-41	42-44	45-47	48-51	52-55

# SPEC SHEET + MEASUREMENTS

PORT AUTHORITY

Port Authority® Women's Luxe Knit Button Tunic. LK5602

## HOW TO MEASURE

---



### BUST

Measure under the arm and around the fullest part of the bust with arms down, keeping tape horizontal.

## COLORS

---



Carolina Blue  
PMS 646C



Deep Black  
PMS BLACK  
C



Purple Mist  
PMS 5205C



River Blue  
Navy  
PMS 7547C