

## SPEC SHEET + MEASUREMENTS

**SPORT-TEK**

### Sport-Tek® Sport-Wick® Flex Fleece 1/4-Zip. ST561

#### Product photo



Make your move in Sport-Wick Flex Fleece. Lightweight with stretch, this fleece has a cotton hand, wicks moisture and delivers trend-right style.

- 7.4-ounce, 70/25/5 poly/rayon/spandex
- Tear-away removable label
- Cadet collar
- Self-fabric cuffs and hem

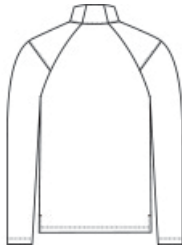
#### CARE INSTRUCTIONS

Machine wash cold with like colors. Do not use fabric softener. Only non-chlorine bleach, when needed. Tumble dry low. Remove promptly. Cool iron, if necessary. Do not dry clean.

#### Sketches



front



back

# SPEC SHEET + MEASUREMENTS



Sport-Tek® Sport-Wick® Flex Fleece 1/4-Zip. ST561

## PRODUCT MEASUREMENTS

	XS	S	M	L	XL	2XL	3XL	4XL
Body Length at Back	26	27	28	29	30	31	31 1/2	32
Chest	18 1/2	20	21 1/2	23	24 1/2	26	28	30
Sleeve Length from Center Back	33 1/4	34	34 3/4	35 1/2	36 1/4	37	37 3/4	38 1/2

**Body Length at Back:** Measured from high point shoulder to finished hem at back.

**Chest:** Measured across the chest one inch below armhole when laid flat.

**Sleeve Length from Center Back:** Measure from Center Back neck to shoulder point to sleeve hem.

## SIZE CHARTS

	XS	S	M	L	XL	2XL	3XL	4XL
Chest	32-34	35-37	38-40	41-43	44-46	47-49	50-53	54-57

# SPEC SHEET + MEASUREMENTS



Sport-Tek® Sport-Wick® Flex Fleece 1/4-Zip. ST561

## HOW TO MEASURE

---



### CHEST

Measure under the arm and around the fullest part of the chest with arms down, keeping tape horizontal.

## COLORS

---



Black  
PMS BLACK  
C



Dark Grey  
Heather  
PMS  
HEATHERED



Light Grey  
Heather  
PMS COOL  
GRAY 5C



True Navy  
PMS 533C



True Royal  
PMS 7687C