

# LEATHER PASSPORT CASE

## Product Layout

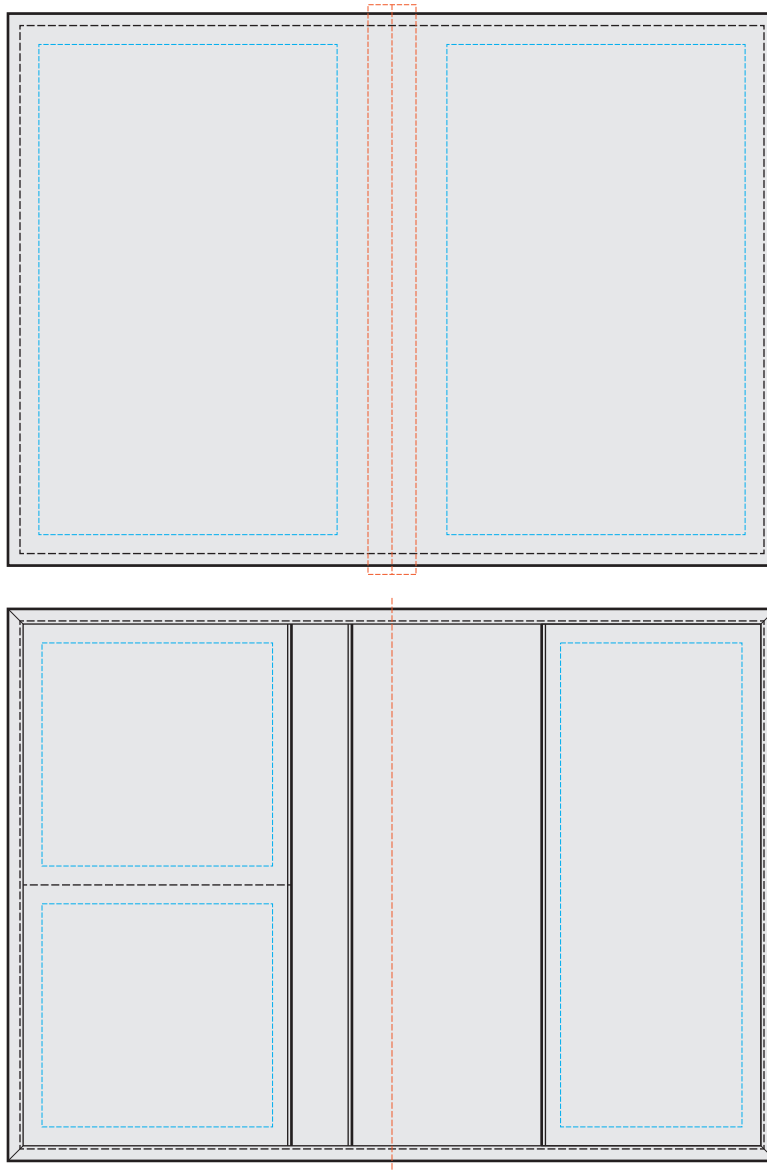
NOTE: ART SHOWN AT 50%

Final Dimensions: IN: 4.0"W x 5.75"H x 0.25" D

Blue dotted line marks safezone

Orange dotted line marks spine / folding point

Black dotted line marks stitch line



PMS XXX C

### DESIGN INFORMATION

Debossing is done using a single imprinted plate. Therefore, only 1 color logos can be used

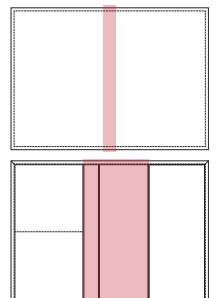
Neon and metallic colors cannot be PMS matched / will not have metallic effect

Artwork placed outside of safe zones may get cut off or be less indented due to leather stretching

For best legibility, lines should be a minimum of 0.325mm

Base product imprint must be within a 3"x 3" box

Artwork should be avoided in the exterior spine and interior spine / pocket - see illustration for reference



Artwork cannot be placed in red areas marked above