

SPEC SHEET + MEASUREMENTS

PORT AUTHORITY

Port Authority® Long Sleeve Performance Staff Shirt. W401

Product photo



Be ready to perform your very best with these shirts designed with stain release, odor-fighting and moisture-wicking technologies.

- 3.3-ounce, 100% polyester
- Stain release
- Odor-fighting
- Moisture-wicking
- Wrinkle-resistant
- Open collar
- French placket
- Dyed-to-match buttons
- Left chest pocket
- Rounded adjustable cuffs
- Rental-friendly

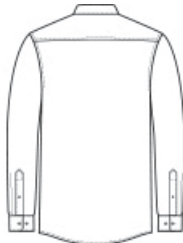
CARE INSTRUCTIONS

Machine wash cold with like colors, do not bleach, tumble dry low, do not use fabric softener, remove promptly, cool iron if needed.

Sketches



front



back

SPEC SHEET + MEASUREMENTS

PORT AUTHORITY

Port Authority® Long Sleeve Performance Staff Shirt. W401

PRODUCT MEASUREMENTS

	XS	S	M	L	XL	2XL	3XL	4XL
Body Length at Back	28	29	30	31	32	33	33 1/2	34
Chest	20	21 1/2	23	24 1/2	26	27 1/2	29 1/2	31 1/2
Neck Circumference	17	17	17 1/2	18	19	19 3/4	20 1/2	21 1/4
Sleeve Length from Center Back	34	34 3/4	35 1/2	36 1/4	37	37 3/4	38 1/2	39 1/4
Pocket Height	5	5	5 1/4	5 1/4	5 1/4	5 1/4	5 1/4	5 1/2
Pocket Width	4 3/8	4 3/8	4 5/8	4 5/8	4 5/8	4 5/8	4 5/8	4 7/8

Body Length at Back: Measured from high point shoulder to finished hem at back.

Chest: Measured across the chest one inch below armhole when laid flat.

Neck Circumference: Measure from center of button to end of buttonhole along the center of the collar stand.

Sleeve Length from Center Back: Measure from Center Back neck to shoulder point to sleeve hem.

Pocket Height: Measure from top to bottom at center.

Pocket Width: Measure from side to side at top edge.

SPEC SHEET + MEASUREMENTS

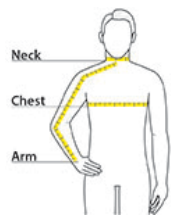
PORT AUTHORITY

Port Authority® Long Sleeve Performance Staff Shirt. W401

SIZE CHARTS

	XS	S	M	L	XL	2XL	3XL	4XL
Chest	32-34	35-37	38-40	41-43	44-46	47-49	50-53	54-57
Neck	14 1/2 - 15	15 - 15 1/2	15 1/2 - 16	16 - 16 1/2	16 1/2 - 17	17 - 17 1/2	17 1/2 - 18	18 - 18 1/2
Arm	30 1/2	32	34	35	36 1/2	37 1/2	38 1/2	39 1/2

HOW TO MEASURE



Neck Measure around the fullest part of the neck at the base.

Chest Width Measure under the arm and around the fullest part of the chest with arms down, keeping tape horizontal. **Arm** Place hand on hip. Start at the center of the back of the neck and measure across the shoulder, to the elbow, and then down to the wrist.

COLORS



Black
PMS BLACK
C



Graphite
PMS 7540C



True Blue
PMS 654C



True Navy
PMS 533C