

SPEC SHEET + MEASUREMENTS

SPORT-TEK

Sport-Tek® Women's Tricot Track Jacket. LST90

Product photo



With an active team, you need track gear that can keep up. Made from comfortable tricot, the relaxed styling of our coordinating jackets and pants allow ample room for easy movement, while the athletic-inspired styling ensures your logo stands out.

- 100% polyester tricot
- Soft-brushed backing
- Flatlock stitching throughout
- Cadet collar
- Reverse coil zipper
- Raglan sleeves
- Side zippered pockets
- Open hem with drawcord and toggles

Please note: This product is transitioning from woven labels to tag-free labels. Your order may contain a combination of both labels.

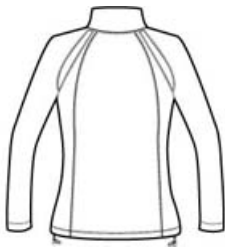
CARE INSTRUCTIONS

Machine wash cold, gentle cycle with like colors. Use mild detergent, remove immediately. Do not allow to lay on itself when wet. Do not bleach. Tumble dry low. Cool iron, if needed.

Sketches



front



back

SPEC SHEET + MEASUREMENTS



Sport-Tek® Women's Tricot Track Jacket. LST90

PRODUCT MEASUREMENTS

| | XS | S | M | L | XL | XXL | 3XL | 4XL |
|---------------------|--------|--------|--------|--------|--------|--------|--------|--------|
| Bust | 19 | 20 | 21 | 22 1/4 | 23 3/4 | 25 1/4 | 26 3/4 | 29 1/4 |
| Sleeve Length | 31 1/2 | 32 1/2 | 33 1/2 | 34 1/2 | 35 1/2 | 36 1/2 | 37 | 37 1/2 |
| Body Length at Back | 23 | 24 | 25 | 26 | 27 | 28 | 29 | 30 |

Bust: Measured across the chest one inch below armhole when laid flat.

Sleeve Length: Start at center of neck and measure down shoulder, down sleeve to hem.

Body Length at Back: Measured from high point shoulder to finished hem at back.

SIZE CHARTS

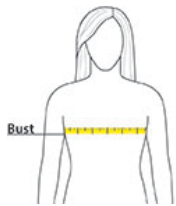
| | XS | S | M | L | XL | XXL | 3XL | 4XL | 5XL | 6XL |
|------|-------|-------|-------|-------|-------|-------|-------|-------|-------|-------|
| Size | 2 | 4/6 | 8/10 | 12/14 | 16/18 | 20/22 | 24/26 | 28/30 | 32/34 | 36/38 |
| Bust | 32-34 | 35-36 | 37-38 | 39-41 | 42-44 | 45-47 | 48-51 | 52-55 | 56-59 | 60-63 |

SPEC SHEET + MEASUREMENTS



Sport-Tek® Women's Tricot Track Jacket. LST90

HOW TO MEASURE



BUST

Measure under the arm and around the fullest part of the bust with arms down, keeping tape horizontal.

COLORS



Black/ Black
PMS BLACK
C



True Navy/
White
PMS 533C



True Royal/
White
PMS 7687C