

SPEC SHEET + MEASUREMENTS

PORT AUTHORITY.

Port Authority® Zephyr Full-Zip Jacket. J344

Product photo



This Zephyr style merges wind- and water-resisting performance with a silky smooth hand. This unlined piece is easy to wear over base or thermal layers. Modern sleek details offer instant appeal at a very appealing price.

- 100% polyester
- Interior wind flap with chin guard
- Elastic binding at cuffs and hem
- Open front pockets

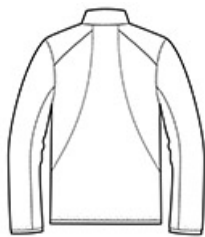
CARE INSTRUCTIONS

Machine wash cold with like colors. Do not bleach or use fabric softener. Tumble dry low. Remove promptly. Do not iron. Do not dry clean.

Sketches



front



back

SPEC SHEET + MEASUREMENTS

PORT AUTHORITY.

Port Authority® Zephyr Full-Zip Jacket. J344

PRODUCT MEASUREMENTS

	XS	S	M	L	XL	2XL	3XL	4XL
Chest	20 1/2	22	23 1/2	25	26 1/2	28	30	32
Body Length at Back	25 1/2	26 1/2	27 1/2	28 1/2	29 1/2	30 1/2	31	31 1/2
Sleeve Length from Center Back	34 3/4	35 1/2	36 1/4	37	37 3/4	38 1/2	39 1/4	40

- Chest:** Measured across the chest one inch below armhole when laid flat.
- Body Length at Back:** Measured from high point shoulder to finished hem at back.
- Sleeve Length from Center Back:** Measure from Center Back neck to shoulder point to sleeve hem.

SIZE CHARTS

	XS	S	M	L	XL	2XL	3XL	4XL
Chest	32-34	35-37	38-40	41-43	44-46	47-49	50-53	54-57

SPEC SHEET + MEASUREMENTS

PORT AUTHORITY.

Port Authority® Zephyr Full-Zip Jacket. J344

HOW TO MEASURE



CHEST

Measure under the arm and around the fullest part of the chest with arms down, keeping tape horizontal.

COLORS



Black
PMS BLACK
C



Dress Blue
Navy
PMS 533C



Grey Steel
PMS 425C