

SPEC SHEET + MEASUREMENTS



New Era® STS 1/4-Zip Hoodie. NEA541

Product photo



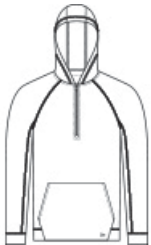
A modern twist on heritage style, this hoodie is a perfect layering piece with its smooth face, jacquard interior and pique-like texture.

- 7.8-ounce, 56/44 cotton/poly double knit jacquard
- Heat transfer label for tag-free comfort
- Metaluxe® zipper
- Patch pocket
- Embroidered New Era flag logo on pocket

CARE INSTRUCTIONS

Machine Wash Cold With Like Colors. Do Not Use Fabric Softener. Do Not Bleach. Tumble Dry Low. Remove Promptly. Cool Iron If Necessary.

Sketches



front



back

SPEC SHEET + MEASUREMENTS



New Era® STS 1/4-Zip Hoodie. NEA541

PRODUCT MEASUREMENTS

	XS	S	M	L	XL	2XL	3XL	4XL
Body Length at Back	27	28	29	30	31	32	32 3/4	33 1/2
Chest Width	18 1/4	19 3/4	21 1/4	22 3/4	24 3/4	26 3/4	29 1/4	32 1/4
Raglans and Dolmans Sleeve Length	33 3/4	34 1/2	35 1/4	36	36 3/4	37 1/2	38 1/4	39

Body Length at Back: Measured from high point shoulder to finished hem at back.

Chest Width: Measured across the chest one inch below armhole when laid flat.

Raglans and Dolmans Sleeve Length: Measure from neck edge to finished hem.

SIZE CHARTS

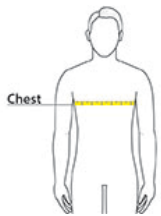
	XS	S	M	L	XL	2XL	3XL	4XL
Chest	32-34	35-37	38-40	41-43	44-47	48-51	52-56	57-61

SPEC SHEET + MEASUREMENTS



New Era® STS 1/4-Zip Hoodie. NEA541

HOW TO MEASURE



CHEST

Measure under the arm and around the fullest part of the chest with arms down, keeping tape horizontal.

COLORS



Black
PMS BLACK
C



Fan White
PMS NO
MATCH



Graphite
PMS 7540C