

## SPEC SHEET + MEASUREMENTS



### Nike Storm-FIT Full-Zip Jacket. NKDX6716

#### Product photo



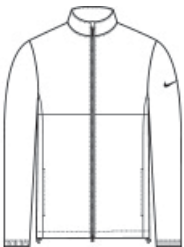
Designed with Storm-FIT technology to shield you from wind and rain, this sporty performance jacket has stretch for movement.

- 3.7-ounce, 100% polyester with a durable water-repellent (DWR) coating and mesh lining
- Zip-through collar
- Side pockets
- Elastic cuffs
- Contrast heat transfer Swoosh logo on left sleeve

#### CARE INSTRUCTIONS

Machine Wash Cold. Wash With Like Colors. Do Not Use Softeners. Remove Immediately. Do Not Allow To Lay On Itself When Wet. Do Not Bleach. Tumble Dry Low. Cool Iron. Do Not Dry Clean.

#### Sketches



front



back

# SPEC SHEET + MEASUREMENTS



## Nike Storm-FIT Full-Zip Jacket. NKDX6716

### PRODUCT MEASUREMENTS

	XS	S	M	L	XL	2XL	3XL	4XL
Body Length at Back	28	28 3/8	28 3/4	29 1/2	30 3/8	31 1/8	31 7/8	32 3/4
Chest Width	19 3/4	21 1/4	22 7/8	24 3/8	26 3/8	28 3/8	30 1/4	32 1/4
Set in Sleeve Length	26 3/4	27	27 3/8	27 1/2	27 3/4	28	28 1/4	28 1/2

**Body Length at Back:** Measured from high point shoulder to finished hem at back.

**Chest Width:** Measured across the chest one inch below armhole when laid flat.

**Set in Sleeve Length:** Measure from Center Back neck to shoulder point to sleeve hem.

### SIZE CHARTS

	XS	S	M	L	XL	2XL	3XL	4XL
Chest	32-35	35-37 1/2	37 1/2-41	41-44	44-48 1/2	48 1/2 -53 1/2	53 1/2 - 58	58-63

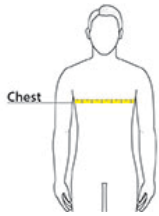
# SPEC SHEET + MEASUREMENTS



Nike Storm-FIT Full-Zip Jacket. NKDX6716

## HOW TO MEASURE

---



### CHEST

Measure under the arm and around the fullest part of the chest with arms down, keeping tape horizontal.

## COLORS

---



Anthracite  
PMS 432C



Black  
PMS BLACK  
C



College Navy  
PMS 533C

LightArmy



Stone  
PMS 7535C