

SPEC SHEET + MEASUREMENTS

SPORT-TEK

Sport-Tek® Travel Full-Zip Jacket. ST800

Product photo



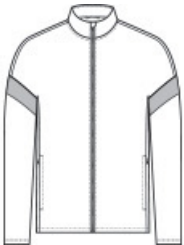
Inspired by classic double knit sets, this moisture-wicking jacket shows that you are part of the team.

- 100% recycled polyester double knit
- Tag-free label
- Self-fabric locker loop
- Coil zipper
- Side slash pockets
- Colorblock self-fabric detail on sleeves

CARE INSTRUCTIONS

Machine Wash Cold With Like Colors. Only Non-Chlorine Bleach When Needed. Tumble Dry Low. Cool Iron If Necessary. Do Not Dry Clean.

Sketches



front



back

SPEC SHEET + MEASUREMENTS



Sport-Tek® Travel Full-Zip Jacket. ST800

PRODUCT MEASUREMENTS

	XS	S	M	L	XL	2XL	3XL	4XL
Body Length at Back	26	27	28	29	30	31	31 1/2	32
Chest Width	18 1/2	20	21 1/2	23	24	24 1/2	28	30
Sleeve Length from Center Back	34 1/4	35	35 3/4	36 1/2	37	37 1/4	38 3/4	39 1/2

Body Length at Back: Measured from high point shoulder to finished hem at back.

Chest Width: Measured across the chest one inch below armhole when laid flat.

Sleeve Length from Center Back: Measure from Center Back neck to shoulder point to sleeve hem.

SIZE CHARTS

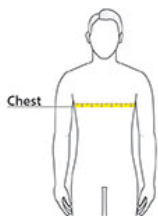
	XS	S	M	L	XL	2XL	3XL	4XL
Chest	32-34	35-37	38-40	41-43	44-46	47-49	50-53	54-57

SPEC SHEET + MEASUREMENTS



Sport-Tek® Travel Full-Zip Jacket. ST800

HOW TO MEASURE



CHEST

Measure under the arm and around the fullest part of the chest with arms down, keeping tape horizontal.

COLORS



Black/ Black
PMS BLACK
C



Black/ White
PMS BLACK
C



Deep Red/
White
PMS 201C



Iron Grey/
White
PMS 7540C



True Navy/
White
PMS 533C



True Royal/
White
PMS 7687C



White/ Iron
Grey
PMS 7540C