

SPEC SHEET + MEASUREMENTS

SPORT-TEK

Sport-Tek® Repeat 1/2-Zip Long Sleeve Hooded Jacket. JST488

Product photo



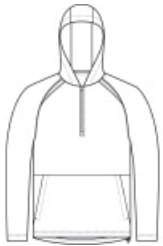
Go out to the game in this moisture-wicking hooded jacket.

- 3.5-ounce, 90/10 poly/spandex
- 100% poly tricot mesh insert
- Snag-resistant
- Tag-free label
- Attached hood
- Contrast tonal mesh panels at shoulder and under arms
- Front pouch pockets
- Adjustable fit at hem with side toggles

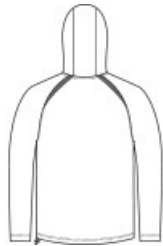
CARE INSTRUCTIONS

Machine Wash Cold With Like Colors. Do Not Use Fabric Softener. Do Not Bleach. Tumble Dry Low. Remove Promptly. Cool Iron If Necessary.

Sketches



front



back

SPEC SHEET + MEASUREMENTS



Sport-Tek® Repeat 1/2-Zip Long Sleeve Hooded Jacket. JST488

PRODUCT MEASUREMENTS

	XS	S	M	L	XL	2XL	3XL	4XL
Body Length at Back	28 3/4	29 3/4	30 3/4	31 3/4	32 3/4	33 3/4	34 1/4	34 3/4
Chest Width	20	21 1/2	23	24 1/2	26	27 1/2	29 1/2	31 1/2
Raglans and Dolmans Sleeve Length	34 3/8	35	35 5/8	36 1/4	36 7/8	37 1/2	38 1/4	39

Body Length at Back: Measured from high point shoulder to finished hem at back.

Chest Width: Measured across the chest one inch below armhole when laid flat.

Raglans and Dolmans Sleeve Length: Measure from neck edge to finished hem.

SIZE CHARTS

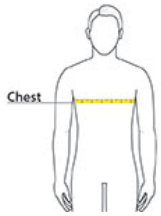
	XS	S	M	L	XL	2XL	3XL	4XL
Chest	32-34	35-37	38-40	41-43	44-46	47-49	50-53	54-57

SPEC SHEET + MEASUREMENTS



Sport-Tek® Repeat 1/2-Zip Long Sleeve Hooded Jacket. JST488

HOW TO MEASURE



CHEST

Measure under the arm and around the fullest part of the chest with arms down, keeping tape horizontal.

COLORS



Black
PMS BLACK
C



Deep Red
PMS 201C



Forest Green
PMS 553C



Iron Grey
PMS 7540C



True Navy
PMS 533C



True Royal
PMS 7686C



White