

SPEC SHEET + MEASUREMENTS



Eddie Bauer® Smooth Mid Layer Fleece Full-Zip. EB2460

Product photo



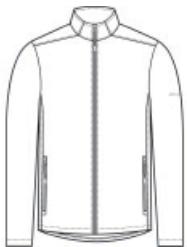
Built for versatility, this smooth-faced, brushed-back fleece is the ideal mid layer. Crafted from recycled polyester, this fleece makes a sustainable difference while keeping you warm and dry at work or play.

- 7.4-ounce, 100% recycled polyester fleece
- Exposed molded zippers with Eddie Bauer logo pulls
- Front zippered pockets
- Open cuffs and open drop tail hem
- Contrast heat transfer Eddie Bauer logo on left sleeve

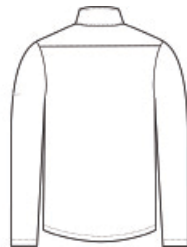
CARE INSTRUCTIONS

Machine Wash Cold With Like Colors. Do Not Use Fabric Softener. Do Not Bleach. Tumble Dry Low. Cool Iron, If Necessary. Do Not Dry Clean.

Sketches



front



back

SPEC SHEET + MEASUREMENTS



Eddie Bauer® Smooth Mid Layer Fleece Full-Zip. EB2460

PRODUCT MEASUREMENTS

	XS	S	M	L	XL	2XL	3XL	4XL
Body Length at Back	27	28	29	30	31	32	32 1/2	33
Chest	18 1/2	20	21 1/2	23	24 1/2	26	28	30
Sleeve Length from Center Back	34 5/8	35 1/4	35 7/8	36 1/2	37 1/8	37 3/4	38 1/2	39 1/4

Body Length at Back: Measured from high point shoulder to finished hem at back.

Chest: Measured across the chest one inch below armhole when laid flat.

Sleeve Length from Center Back: Measure from Center Back neck to shoulder point to sleeve hem.

SIZE CHARTS

	XS	S	M	L	XL	2XL	3XL	4XL
Chest	32-34	35-37	38-40	41-43	44-46	48-50	52-54	55-57

SPEC SHEET + MEASUREMENTS



Eddie Bauer® Smooth Mid Layer Fleece Full-Zip. EB2460

HOW TO MEASURE



CHEST

Measure under the arm and around the fullest part of the chest with arms down, keeping tape horizontal.

COLORS



Black
PMS BLACK
C



Iron Gate
PMS 7540C



River Blue
Navy
PMS 533C