

SPEC SHEET + MEASUREMENTS

PORT AUTHORITY.

Port Authority® Packable Puffy Jacket. J850

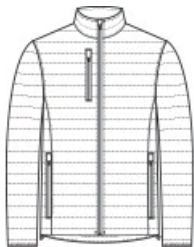
Product photo



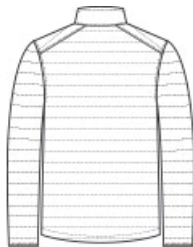
Staying warm while on the go has never been easier with our Packable Puffy Jackets. Thanks to a water-repellent fabric coating and finish, you'll remain comfortable no matter where your day takes you.

- 100% polyester shell and lining with polyfill insulation
- Interior storm flap with chin guard
- Reverse coil zippers
- Zippered chest pocket
- Front zippered pockets
- Elastic binding at cuffs
- Adjustable locking drawcord at hem
- Port Pocket™ for decoration access
- Insulation method: 2.4-ounce polyfill
- Water protection method: PU coating and water-repellent finish
- Dyed-to-match drawstring carrying pouch included

Sketches



front



back

CARE INSTRUCTIONS

Machine wash cold with like colors. Do not bleach. Tumble dry low. Cool iron. Do not use fabric softener. Do not dry clean.

SPEC SHEET + MEASUREMENTS

PORT AUTHORITY

Port Authority® Packable Puffy Jacket. J850

PRODUCT MEASUREMENTS

	XS	S	M	L	XL	2XL	3XL	4XL
Body Length at Back	26	27	28	29	30	31	31 1/2	32
Chest Width	19 1/2	21	22 1/2	24	25 1/2	27	29	31
Sleeve Length from Center Back	34 3/4	35 1/2	36 1/4	37	37 3/4	38 1/2	39 1/4	40

Body Length at Back: Measured from high point shoulder to finished hem at back.

Chest Width: Measured across the chest one inch below armhole when laid flat.

Sleeve Length from Center Back: Measure from Center Back neck to shoulder point to sleeve hem.

SIZE CHARTS

	XS	S	M	L	XL	2XL	3XL	4XL
Chest	32-34	35-37	38-40	41-43	44-46	47-49	50-53	54-57

SPEC SHEET + MEASUREMENTS

PORT AUTHORITY.

Port Authority® Packable Puffy Jacket. J850

HOW TO MEASURE



CHEST

Measure under the arm and around the fullest part of the chest with arms down, keeping tape horizontal.

COLORS



Cobalt Blue
PMS 7687C



Cobalt Blue
PMS 7687C



Deep Black
PMS BLACK
C



Fire Red/
Graphite
PMS 202C



Regatta Blue/
River Blue
Navy
PMS 2380C



Sterling Grey/
Graphite
PMS 7540C