

SPEC SHEET + MEASUREMENTS

PORT AUTHORITY.

Port Authority® Arc Sweater Fleece Jacket. F428

Product photo



With a subtle heathered pattern, our Arc Sweater Fleece combines the comfort of a sweater with the unbeatable warmth of fleece. Works well on its own or as a multi-seasonal layer.

- 8.6-ounce, 100% polyester sweater fleece
- Anti-pill finish
- Molded center front zipper
- Reverse coil zippered hand pockets

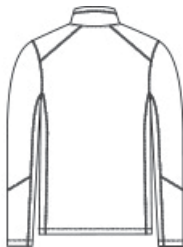
CARE INSTRUCTIONS

Machine Wash Cold Gentle Cycle With Like Colors. Only Non-Chlorine Bleach When Needed. Tumble Dry Low. Cool Iron If Necessary.

Sketches



front



back

SPEC SHEET + MEASUREMENTS

PORT AUTHORITY

Port Authority® Arc Sweater Fleece Jacket. F428

PRODUCT MEASUREMENTS

	XS	S	M	L	XL	2XL	3XL	4XL
Body Length at Back	26	27	28	29	30	31	31 1/2	32
Chest	19	20 1/2	22	23 1/2	25	26 1/2	28 1/2	30 1/2
Sleeve Length from Center Back	34 1/4	35	35 3/4	36 1/2	37 1/4	38	38 3/4	39 1/2

Body Length at Back: Measured from high point shoulder to finished hem at back.

Chest: Measured across the chest one inch below armhole when laid flat.

Sleeve Length from Center Back: Measure from Center Back neck to shoulder point to sleeve hem.

SIZE CHARTS

	XS	S	M	L	XL	2XL	3XL	4XL
Chest	32-34	35-37	38-40	41-43	44-46	47-49	50-53	54-57

SPEC SHEET + MEASUREMENTS

PORT AUTHORITY

Port Authority® Arc Sweater Fleece Jacket. F428

HOW TO MEASURE



CHEST

Measure under the arm and around the fullest part of the chest with arms down, keeping tape horizontal.

COLORS



Deep Black
PMS BLACK
C



Deep Smoke
Heather

DesertSndH



Grey Smoke
Heather



Insignia Blue
Heather
PMS 7687C