

SPEC SHEET + MEASUREMENTS



Nike Therma-FIT 1/4-Zip Fleece. CN9492

Product photo



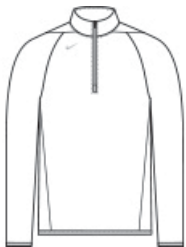
Nike has elevated this style as a year-round workout essential with incredibly warm, insulating Therma-FIT fabric which breathes and manages moisture.

- 7.4-ounce, 60/40 recycled polyester/polyester Therma-FIT fabric
- Zip-through collar
- Elastic binding at the open cuffs
- Open drop tail hem
- Contrast heat transfer Swoosh logo on right chest

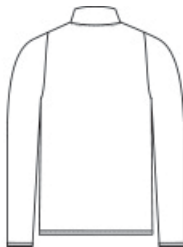
CARE INSTRUCTIONS

Machine Wash Cold (30c). Wash Inside Out. Wash With Like Colors. Do Not Use Softeners. Do Not Use Bleach. Tumble Dry Low. Do Not Iron. Do Not Dry Clean.

Sketches



front



back

SPEC SHEET + MEASUREMENTS



Nike Therma-FIT 1/4-Zip Fleece. CN9492

PRODUCT MEASUREMENTS

| | S | M | L | XL | 2XL | 3XL |
|--------------------------------|--------|--------|--------|--------|--------|--------|
| Body Length at Back | 28 3/8 | 28 7/8 | 29 5/8 | 30 5/8 | 31 1/4 | 32 |
| Chest Width | 21 1/4 | 22 7/8 | 24 3/8 | 26 3/8 | 28 3/8 | 30 3/8 |
| Sleeve Length from Center Back | 31 7/8 | 32 1/2 | 32 7/8 | 33 3/8 | 33 7/8 | 34 1/2 |

Body Length at Back: Measured from high point shoulder to finished hem at back.

Chest Width: Measured across the chest one inch below armhole when laid flat.

Sleeve Length from Center Back: Measure from Center Back neck to shoulder point to sleeve hem.

SIZE CHARTS

| | S | M | L | XL | 2XL | 3XL | 4XL |
|-------|-----------|-----------|-------|-----------|---------------|-----------|-------|
| Chest | 35-37 1/2 | 37 1/2-41 | 41-44 | 44-48 1/2 | 48 1/2-53 1/2 | 53 1/2-58 | 58-63 |

SPEC SHEET + MEASUREMENTS



Nike Therma-FIT 1/4-Zip Fleece. CN9492

HOW TO MEASURE



CHEST

Measure under the arm and around the fullest part of the chest with arms down, keeping tape horizontal.

COLORS



Team
Anthracite
PMS 7540C



Team Black
PMS BLACK
C



Team Dark
Green
PMS 350C



Team Navy
PMS 533C



Team Royal
PMS 7687C



Team Scarlet
PMS 186C