

SPEC SHEET + MEASUREMENTS



District® Cloud Fleece Hoodie. DT7800

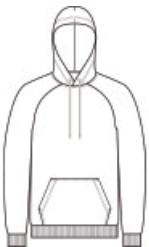
Product photo



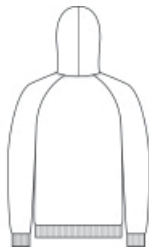
With incredible softness and casual ease, this wondrously lofty fleece is destined to be a top-of-stack favorite. At the heart of this fleece is a unique 3-end fabrication that redefines loftiness and comfort. Fabric dyeing and garment washing is then applied to give Cloud Fleece an unprecedented softness to both its hand feel and colors.

- 9.4-ounce (320-gram)
- 80/20 combed ring spun cotton/polyester, 3-end fleece
- 100% combed ring spun cotton face
- Fabric-dyed, garment-washed
- Twill back neck tape
- Jersey-lined hood
- Dyed-to-match flat drawcords
- Raglan sleeves
- Front pouch pocket
- 2x1 rib knit cuffs and hem
- Side seamed
- Tear-away label

Sketches



front



back

CARE INSTRUCTIONS

Machine Wash Cold With Like Colors. Only Non-Chlorine Bleach, When Needed. Tumble Dry Low. Cool Iron, If Necessary.

SPEC SHEET + MEASUREMENTS



District® Cloud Fleece Hoodie. DT7800

PRODUCT MEASUREMENTS

	XS	S	M	L	XL	2XL	3XL	4XL
Body Length at Back	26 1/2	27 1/2	28 1/2	29 1/2	30 1/2	31 1/2	32	32 1/2
Chest	18	19 1/2	21	22 1/2	24	25 1/2	27 1/2	29 1/2
Raglans and Dolmans Sleeve Length	33 3/4	34 1/2	35 1/4	36	36 3/4	37 1/2	38 1/4	39

Body Length at Back: Measured from high point shoulder to finished hem at back.

Chest: Measured across the chest one inch below armhole when laid flat.

Raglans and Dolmans Sleeve Length: Measure from neck edge to finished hem.

SIZE CHARTS

	XS	S	M	L	XL	2XL	3XL	4XL
Chest	32-34	35-37	38-40	41-43	44-46	47-49	50-53	54-57

SPEC SHEET + MEASUREMENTS



District® Cloud Fleece Hoodie. DT7800

HOW TO MEASURE



CHEST

Measure under the arm and around the fullest part of the chest with arms down, keeping tape horizontal.

COLORS



Deep Steel
Blue
PMS 2379C



Duck Brown
PMS 7568C



Flint Blue
Heather
PMS 4136C



Gardenia



Heathered
Charcoal
PMS 7540C



Heathered
Steel
PMS 423C



Jet Black
PMS BLACK
C



New Navy
PMS 533C



Slate Green
PMS 7538C



Smoky
Amethyst
PMS 4113C