

## SPEC SHEET + MEASUREMENTS



### New Era® Women's Tri-Blend Fleece Crop Crew. LNEA514

#### Product photo



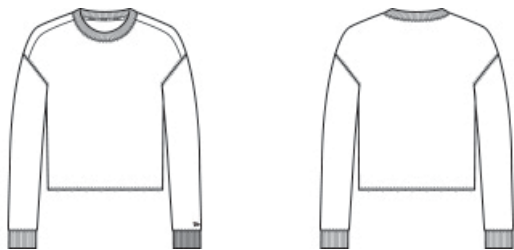
With a statement-making crop hem, this midweight crew is as comfortable in the stands as it is on the street.

- 7.1-ounce, 55/34/11 cotton/poly/rayon fleece
- Debossed New Era neck taping
- Heat transfer label for tag-free comfort
- Rib knit neck and cuffs
- Raised silicone New Era flag logo at left cuff
- High-crop, raw-edge hem sits at hip

#### CARE INSTRUCTIONS

Machine Wash Cold With Like Colors. Do Not Use Fabric Softener. Only Non-Chlorine Bleach When Needed. Tumble Dry Low. Remove Promptly. Cool Iron If Necessary.

#### Sketches



front

back

# SPEC SHEET + MEASUREMENTS



## New Era® Women's Tri-Blend Fleece Crop Crew. LNEA514

### PRODUCT MEASUREMENTS

	XS	S	M	L	XL	2XL	3XL	4XL
Size	2	4/6	8/10	12/14	16/18	20/22	24/26	28/30
Body Length at Back	20 1/2	21	21 1/2	22	22 1/2	23	23 1/2	24
Bust	18 1/2	19 1/2	20 1/2	22	23 1/2	25	27	29
Sleeve Length from Center Back	31 1/2	32	32 1/2	33 1/8	33 3/4	34 3/8	34 3/4	35 1/8

**Body Length at Back:** Measured from high point shoulder to finished hem at back.

**Bust:** Measured across the chest one inch below armhole when laid flat.

**Sleeve Length from Center Back:** Measure from Center Back neck to shoulder point to sleeve hem.

### SIZE CHARTS

	XS	S	M	L	XL	2XL	3XL	4XL
Size	2	4/6	8/10	12/14	16/18	20/22	24/26	28/30
Bust	32-34	35-36	37-38	39-41	42-44	45-47	48-51	52-55

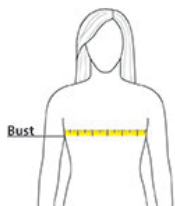
## SPEC SHEET + MEASUREMENTS



New Era® Women's Tri-Blend Fleece Crop Crew.  
LNEA514

### HOW TO MEASURE

---



#### **BUST**

Measure under the arm and around the fullest part of the bust with arms down, keeping tape horizontal.

### COLORS

---



Black Heather  
PMS BLACK  
C



Shadow Grey  
Heather  
PMS COOL  
GRAY 10C



Soft Beige  
PMS 7527C