



# Nike Club Fleece Sleeve Swoosh Crew NKFD9863



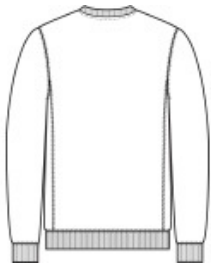
Lightweight with a brushed back, this crew feels extra soft on the inside and smooth on the outside. Design details include rib knit collar, cuffs and hem. A contrast Swoosh logo is embroidered on left sleeve. Made of 8.3-ounce, 80/20 cotton/polyester.

### CARE INSTRUCTIONS

Machine Wash Cold. Wash With Like Colors. Do Not Use Softeners. Do Not Use Bleach. Tumble Dry Low. Do Not Iron. Do Not Dry Clean.



front



back

### HOW TO MEASURE



**CHEST WIDTH**  
Measure under the arm and around the fullest part of the chest with arms down, keeping tape horizontal.

### SIZE CHART

	XS	S	M	L	XL	2XL	3XL	4XL
Chest	32-35	35-37 1/2	37 1/2-41	41-44	44-48 1/2	48 1/2 -53 1/2	53 1/2 - 58	58-63

### COLOR INFORMATION

Please note: PMS code information is shown only when an exact match is available.



Anthracite  
PMS 432C



Black  
PMS BLACK C



Dark Grey Heather  
PMS 422C



Game Royal  
PMS 2758C



Midnight Navy  
PMS 533C



White